

COMPANY PROFILE



CAPTAIN

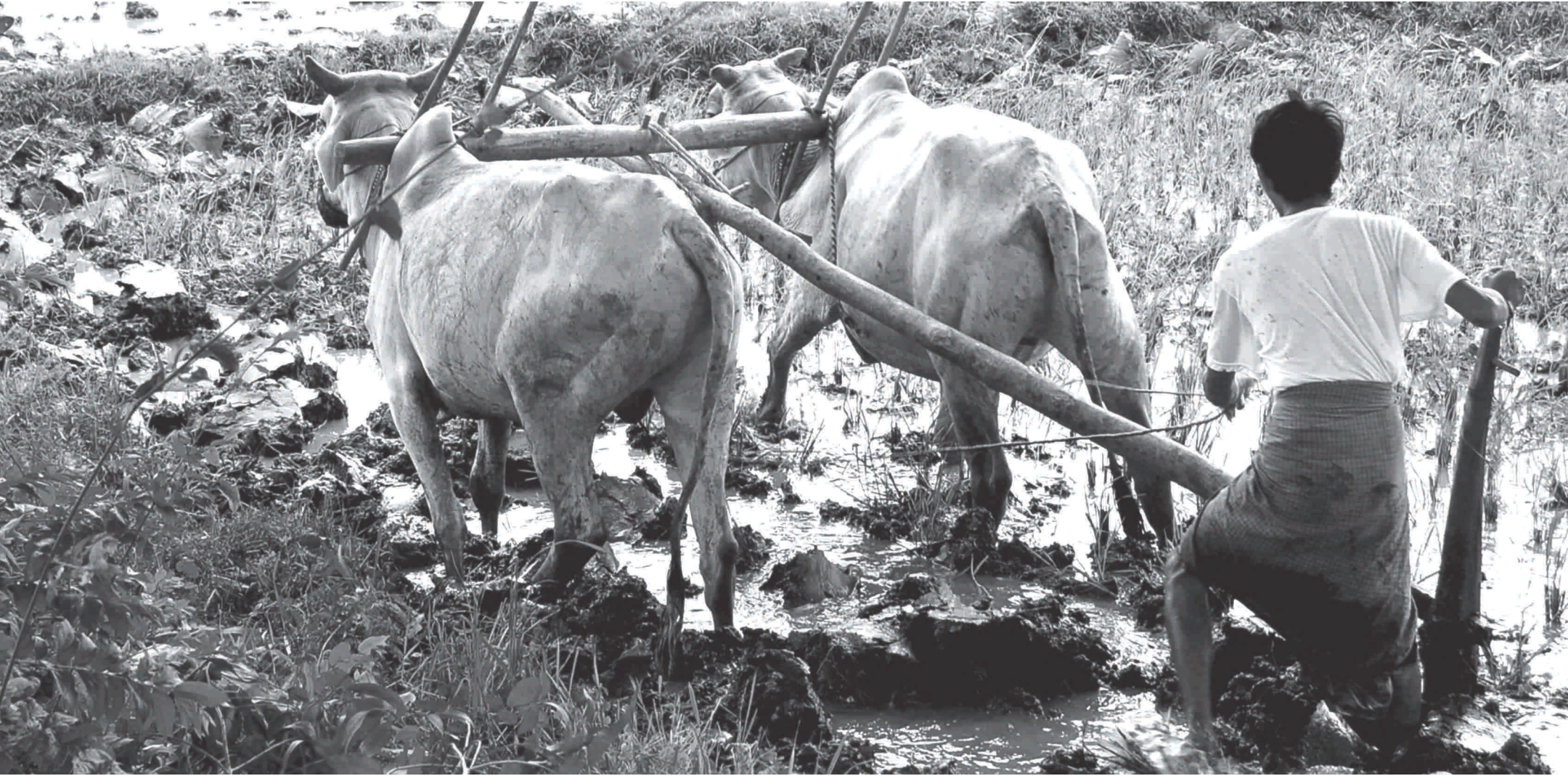
Pioneer of The Mini Tractor





CAPTAIN
Pioneer of The Mini Tractor

**GOODBYE
TO HARDSHIP**



A REVOLUTIONARY STEP TOWARDS FARM MECHANIZATION



CAPTAIN
Pioneer of The Mini Tractor





CAPTAIN

Pioneer of The Mini Tractor



Our VISION...

To Become World's No. 1 Compact Tractors & Implements Manufacturing Company by 2025.

Our MISSION...

Reach Every Farmer and lead their life, through various solutions of the farm mechanization for revolution in agriculture.

Our CORE VALUES...

- Work with Honesty, Trust and Transparency.
- Happiness in customer's life with satisfaction of our Best Quality product's performance.
- Creating the future with continuous Change & innovation.
- Growing Together approach to develop our associates with trust, respect and value them in all our interaction and relation.
- Growth with values and ethics.

ABOUT US



Success is valued by strength of the DESIRE. This saying perfectly reflects the Journey of Captain Tractors Pvt. Ltd. A single new thought of visionary farmer brothers changed the dimensions of Agri world. India's 1st Mini tractor was introduced in 1998, by ultimate efforts of Mr. G.T. Patel & Mr. M.T. Patel whose journey started with smallest HP tractor, continued with its segments, by adopting modern technological aspects, tools & equipment along with high facilitate skilled & qualified staff.

Everyone thinks Ordinary but one who wants to reach at the height, always thinks an Extra Ordinary. New generation brought out different era. Considering solutions for farmers, product is designed at its best for its optimum utilization. Captain Tractors has always been a strongest shoulder of every farmer which helps up bring the golden fields. We have always trying to give farmer the worthwhile product, which helps them earn, as well as to save their energy, money and time. Our motto is to satisfy customer at our best. Services facilitated to each customer are at their doorstep.

Captain Tractors is an agricultural visionary company, having a Vision & Mission of shining in the field of mini tractors. To satisfy the farmers at their fullest, we have started with various categories range of implements which added a feather to Captain Tractors. Going beyond the boundaries of India, we also export our products in 50+ countries.

Born due to our impressive innovation in R&D and entrepreneurship, we have been honoured with 9 awards by Indian Government and State Government. ISO 9001 : 2015 CERTIFICATE reflects Captain Tractors' system and punctuality towards Quality of our Products.

We have always proved our identity in Global Market. We will keep working the same and will bring many models which would ease the work of farmers and will put Agriculture to the different orbit by Farm Mechanization.



Board of Directors

PASSION
PURPOSE
PROGRESS

INNOVATION OF COMPACT TRACTOR

The bird which touches the sky might have started from the bottom at once. Each journey to the chariot glorifies the hard work of the person who used to sleep in a cradle once. An early start, with a purpose of giving a new way of farming to every farmer, the ever Inspiring Ideology of Mr. G.T. PATEL & Mr. M.T. PATEL, and to set up an idea of diversifying the agriculture world with a separate view. Starting up with the experiments in 1994, finally the India's first 100% Indigenized MINI TRACTOR has been rolled out to define its place in 1998. Along with tough spirit & hard working, Captain Tractors touched the hearts of every farmer and became PIONEER in the world of Indian Mini Tractors.

Today, with the plenty of innovations & creativity, Captain Tractors constantly moved on with a saying, "Every Innovation brings a new Solution to the Customer". Right from the beginning, customer reviews and their level of satisfaction are kept at a Priority.

Along with update in the technology, New Generation stepped in & took position in Captain Tractors. Their unique ideas, capabilities, hardworking attitudes and superior inputs made Captain Tractors unique in every reach.



Mr. G. T. Patel Taking Trial of Innovated Mini Tractor



1st Generation



2nd Generation



3rd Generation



4th Generation



5th Generation



6th Generation



7th Generation



8th Generation



CAPTAIN
Pioneer of The Mini Tractor



WHY DO YOU REQUIRE A COMPACT TRACTOR ?

LAND FRAGMENTATION



Land holding becomes smaller day by day as families are growing and population is also increasing.

ECONOMIC FARMING



Traditional Higher HP tractors are costlier to own and operate when Bullocks & Manual Machines are slower and time consuming.

ALTERNATE OPTION



Agriculture Modernization with help of technologies will replace bullocks & labors and this will improve the living standards of the farmers.

MODERN FARMING



Young generation of the farmer demands Modern & Smooth Technological Aspects which can help them work in a smarter and easier way.



CAPTAIN
Pioneer of The Mini Tractor



**COMPACT
CONVENIENT**

REWARDS & APPRECIATIONS



Award for **"INNOVATION IN TECHNOLOGY For NEW PRODUCT / PROCESS DEVELOPMENT (2011)"**
 Prime Minister (The Then CM, Gujarat)
 Shri Narendra Modi Presented The Prestigious Award to Mr. Rajeshbhai G. Patel (MD)



Award for **"TREMENDOUS CONTRIBUTION IN R & D FOR MINI TRACTOR INDUSTRY (2008)"**,
 Prime Minister Dr. Manmohan Singh Presented The Prestigious Award to Mr. Maganbhai T. Patel (Vice Chairman)



Award for **"OUTSTANDING EFFORTS IN ENTREPRENEURSHIP IN INDIAN INDUSTRY (2008)"**
 State MSME Minister Shri Dinsha Patel Presented The Prestigious Award to Mr. Gandubhai T. Patel (Chairman)



Award for **"BEST MSME ENTREPRENEURSHIP AWARD (2016)"**
 Hon'ble Chief Minister of Gujarat, Shri Vijaybhai Rupani Presented The Prestigious Award To Mr. Rajesh Patel (M.D.) & Mr. Nayan Movaliya (Director)



Award for **"INNOVATION IN TECHNOLOGY FOR NEW PROCESS DEVELOPMENT (2014)"**
 Chief Minister, Smt. Anandiben Patel Presented The Prestigious Award to Mr. Shaileshbhai Movaliya (Director)



Award for **"INNOVATION IN TECHNOLOGY FOR NEW PRODUCT / PROCESS DEVELOPMENT (2015)"**
 Union Minister Of MSME Shri Kalraj Mishra Presented The Prestigious Award To Mr. Rajesh Patel (MD) & Mr. Satish Movaliya (Director)





CAPTAIN
Pioneer of The Mini Tractor



Award for **"OUT STANDING ENTREPRENEURSHIP AWARD (2015)"**
Union Minister Of MSME Shri Kalraj Mishra Presented The Prestigious Award To Mr. Kaileshbhai Movaliya (Director)



Award for **"INNOVATION IN TECHNOLOGY FOR NEW PRODUCT & PROCESS DEVELOPMENT (2010)"**
Principal Secretary Shri M. Sahu Presented The Prestigious Award to Mr. Rajeshbhai G. Patel (MD)



Award for **"QUALITY AND ENVIRONMENT MESSURES AWARD (2012)"**
Finance & Industry Minister, Shri Saurabhbhai Patel Presented The Prestigious Award to Mr. Nayanbhai Movaliya (Director)



"HERCULES AWARD (2019)"
presented by Chairman of Gujarat Chamber of Commerce and Industry (GCCI) - MSME Committee - Mr. Jaimin Vasa to Mr. Kailesh Movaliya (Director) & Mr. Nayan Movaliya (Director) Organized By Gujarat Innovation Society



"QUALITY MARK AWARD (2019)"
presented by Bollywood Actor Mr. Aditya Pancholi & Honorable Union Minister of State Shipping, Chemical and Fertilizer Mr. Mansukh Mandaviya to Mr. Shailesh Movaliya (Director).



"BEST TRACTOR OF THE YEAR <30 HP (2019)"
in Farm Power Awards Organized by Indian Council of Food and Agriculture and presented by Mr. T. R. Kesavan & Mr. Yudhvir Singh (Bhartiya Kisan Union)





CAPTAIN
Pioneer of The Mini Tractor

GLORIOUS JOURNEY OF INNOVATIONS SINCE 1994



MILESTONES



CAPTAIN
Pioneer of The Mini Tractor

1998

India's 1st Mini Tractor
Rolled Out Successful

2001

CAPTAIN TRACTORS Successfully
Approved By Govt. of India

2002

Developed All Major Agricultural
Implements, Suitable to Mini Tractor

2003

CAPTAIN DI 2600 Enlisted in NABARD

2004

CAPTAIN DI 2600 got Subsidy Approval
from Govt. of India New Delhi

2005

Got ISO 9001-2000 Certification
With Product Design

2006

MOU With All Major Nationalized Banks
For Finance Availability

2008

Awarded For Outstanding Efforts in
Entrepreneurship in Indian Industry
Awarded For Tremendous Contribution
in R & D For Mini Tractor Industry

2009

CAPTAIN DI 2600 4WD
Launched Successfully

2010

Established Separate Division for
Manufacturing Agriculture Implements

2011

Awarded For Innovation In Technology
For New Product / Process Development

2012

"Strategic Alliance" with World Renowned
TAFE Group for Small Tractor Series

2013

Series of 120 DI 2WD & 4WD Launched
Successfully & we got award for
"QUALITY & ENVIRONMENT MEASURES"

2014

Series of 200 DI 2WD & 4WD and
250 DI 2WD & 4WD Launched Successfully

2015

Awarded For Innovation In Technology
For New Product / Process Development

2016

"7G" The Seventh Generation Series launched.
Got Homologation for (European) Market
Launched 280 DX Model

2017

Exported Tractors to 5 Continents in a
Single month

2018

Introduced CAPTAIN 273 with
Stage V emission norms for
European market .

2019

Awarded for Best Orchard Tractor of
the year from Indian Tractor of the
Year (ITOTY)

Quality Mark Award for Best Quality
Product Manufacturing and Service

Hercules Award for Developing Vast
Range of 7th Generation Mini Tractor
by Gujarat Innovation Society (GIS)

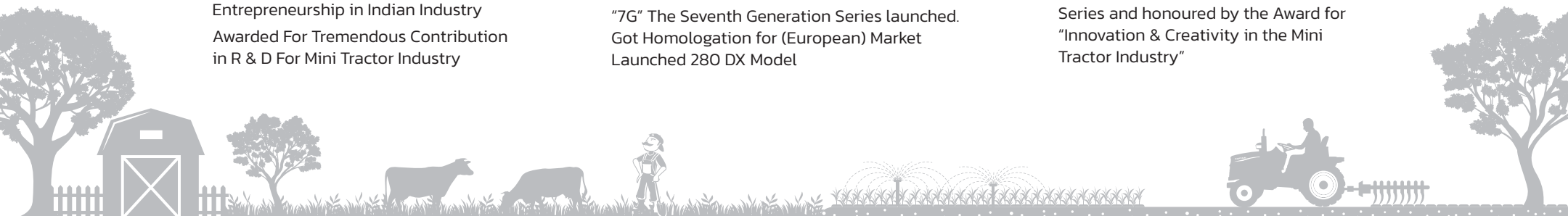
Best Tractor of the Year < 30 HP in
Farm Power Awards by Indian Council
of Food and Agriculture

2020

Won the Best Tractor of The Year in the
30 HP category

2021

Launched 8G – The Eighth Generation
Series and honoured by the Award for
"Innovation & Creativity in the Mini
Tractor Industry"





OUR DOMESTIC PRESENCE



As per our mission, we are striving to reach each farmer and lead their lives through various solutions of Farm Mechanization. We are the one who is providing 360 degree farming solutions to the farmers i.e., from Land Preparation to the Harvesting. Moreover, we are serving our products in the industrial sector for commercial usages like transportation, cleaning, material moving, etc. We are delighted to have our wide network in across India with outlets in 19 states run by 170+ channel partners.



DOMESTIC

- Gujarat
- Maharashtra
- Karnataka
- Madhya Pradesh
- Uttar Pradesh
- Tamilnadu
- Rajasthan
- Andhra Pradesh
- Jammu Kashmir
- Manipur
- Bihar
- Telangana
- Nagaland
- Ladakh

OUR WORLDWIDE PRESENCE



CAPTAIN
Pioneer of The Mini Tractor



DISTRIBUTORS / DEALERS

- Peru
- Colombia
- Guatemala
- Mexico
- Chile
- Reunion Island
- Portugal
- Spain
- France
- Netherlands
- Poland
- Czech Republic
- Austria
- Belgium
- Germany
- Denmark
- UK
- Slovakia
- Hungary
- Finland
- Latvia
- Lithuania
- Cyprus
- Sudan
- Chad
- Ethiopia
- Rwanda
- Uganda
- Kenya
- Malawi
- Mozambique
- Zimbabwe
- South Africa
- Angola
- D.R. Congo
- Eq. Guinea
- Nigeria
- Morocco
- Kuwait
- Qatar
- Saudi Arabia
- Bhutan
- Myanmar
- Thailand
- Malaysia
- Japan

DIRECT SALES TO

- Bangladesh
- Sri Lanka
- Nepal
- Cambodia
- Oman
- Seychelles
- Bahrain
- Egypt
- Ghana
- Guinea
- Brazil
- Bolivia



WIDEST RANGE OF COMPACT TRACTOR

CAPTAIN
15-30 HP COMPACT TRACTOR SERIES



	SPECIFICATION	200 DI 20 HP Series	200 DI 4WD 20 HP Series	250 DI 25 HP Series	250 DI 4WD/250 4WD+ 25 HP Series	280 4WD 28 HP Series	280 DX 28 HP Series
Engine	No. of Cylinder	1	1	2	2	2	2
	Capacity (CC)	895	895	1290	1290	1290	1290
	Rated Speed (RPM)	2300	2300	2200	2200	2500	2500
	Cooling System	Water Cooled	Water Cooled	Water Cooled	Water Cooled	Water Cooled	Water Cooled
	Bore/Stroke (mm)	100/114	100/114	95/91	95/91	95/91	95/91
Tyres	Front	5.20 x 14	5.00 x 12	5.20 x 14	5.00 x 12 / 6.00 x 12	6.00 x 12	5.00 x 15
	Rear	8.00 x 18	8.00 x 18	8.00 x 18 / 8.3 x 20	8.00 x 18 / 8.3 x 20	8.3 x 20	9.5 x 24
Dimension (+/-5%)	Size (LXWXH) mm	2600 x 1065 x 1700	2565 x 1070 x 1695	2625 x 1060 x 1700	2600 x 1040 x 1712 / 2610 x 1080 x 1735	2600 x 1065 x 1750	2600 x 1240 x 1780
	Weight (kg)	885	940	890	945 / 980	970	1000
	Wheel Base (mm)	1530	1500	1550	1550	1550	1550
	Track Width (mm)	825 (950 Adjustable)	825 (950 Adjustable)	825(950 Adjustable)/ 850(950 Adjustable)	825(950 Adjustable)/ 850 (950 Adjustable)	850 (950 Adjustable)	960 (1070 Adjustable)
Transmission	Type	Synchromesh	Synchromesh	Synchromesh	Synchromesh	Synchromesh	Synchromesh
	No. of Gear	8 Forward, 2 Reverse	8 Forward, 2 Reverse	8 Forward, 2 Reverse	8 Forward, 2 Reverse	8 Forward, 2 Reverse	8 Forward, 2 Reverse
	P.T.O. Speed	4+1	4+1	540@2200	540@2200	540@2400	540@2400
	Max. Speed (km/hr)	25	20	19.15 / 24	20 / 22	25	28.8
	Type of Brake	Dry internal Exp. Shoe (Water Proof) / OIB	Dry internal Exp. Shoe (Water Proof) / OIB	Dry internal Exp. Shoe (Water Proof) / OIB	Dry internal Exp. Shoe (Water Proof) / OIB	Dry internal Exp. Shoe (Water Proof) / OIB	Dry internal Exp. Shoe (Water Proof) / OIB
	Steering	Mechanical Steering	Mechanical / Power Steering	Mechanical / Power Steering	Mechanical / Power Steering	Mechanical / Power Steering	Mechanical / Power Steering

Note : Products undergo continuous upgradations. Hence, above mentioned specifications are subject to change without prior notice.

Powered by



SPECIFICATION

223 4WD

283 4WD

Engine

Engine Power(HP)	22
No. of Cylinder	3
Capacity (CC)	952
Rated Speed (RPM)	3000
Cooling System	Water Cooled
Bore/Stroke (mm)	76/70

Engine Power(HP)	27
No. of Cylinder	3
Capacity (CC)	1318
Rated Speed (RPM)	2700
Cooling System	Water Cooled
Bore/Stroke (mm)	78/92

Tyres

Front	5.00 x 12 / 180 85D12
Rear	8.00 x 18 / 8.30 x 20

Front	5.00 x 12 / 180 85D12
Rear	8.00 x 18 / 8.30 x 20

Dimension
(+/-5%)

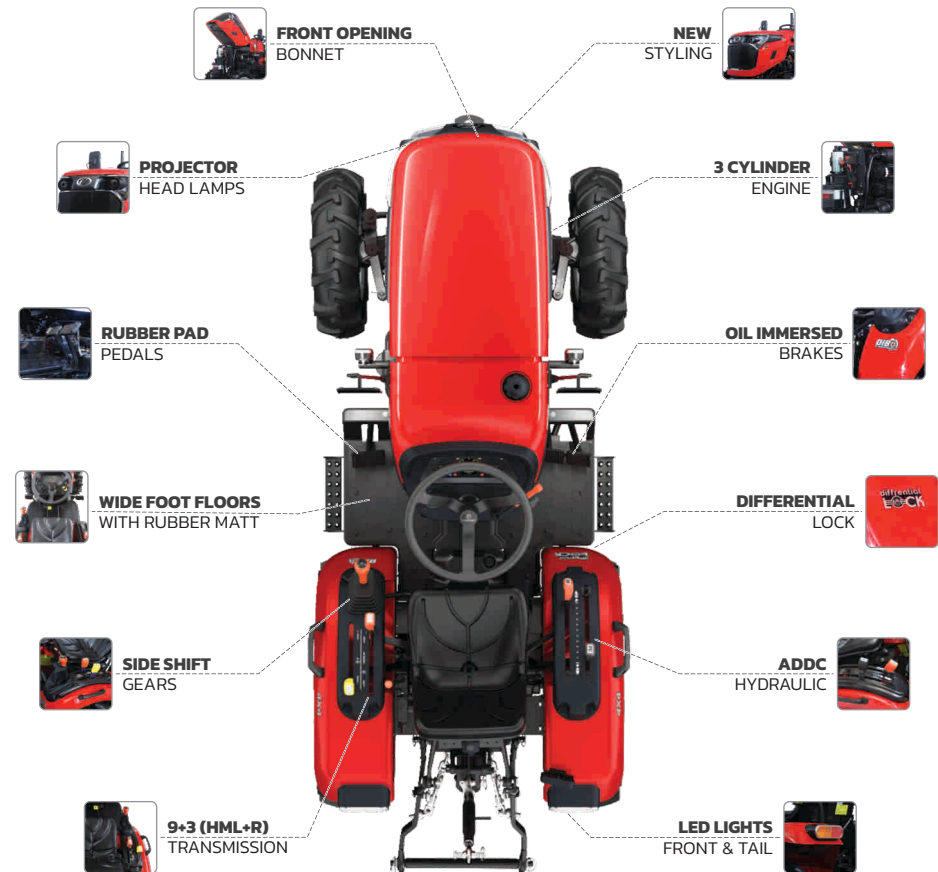
Size (LxWx H) mm	2884 x 1080 x 1470
Weight (kg)	885
Wheel Base (mm)	1500
Track Width (mm)	710 (810 Adjustable)

Size (LxWx H) mm	2690 x 1080 x 1470
Weight (kg)	910
Wheel Base (mm)	1490
Track Width (mm)	810 (910 Adjustable)

Transmission

Type	Sliding Mesh
No. of Gear	9 Forward, 3 Reverse (H+M+L)
P.T.O. Speed	540@2500 / 1000@2500
Max. Speed (km/hr)	24/26
Type of Brake	Oil Immersed Disc Brakes
Steering	Power/Non Power(Optional) Steering

Type	Sliding Mesh
No. of Gear	9 Forward, 3 Reverse (HML+R)
P.T.O. Speed	540@2500 / 1000@2500
Max. Speed (km/hr)	25.5/27.23
Type of Brake	Oil Immersed Disc Brakes
Steering	Power Steering



Note : Products undergo continuous upgradations. Hence, above mentioned specifications are subject to change without prior notice.

EUROPEAN UNION APPROVED SERIES



CAPTAIN
Pioneer of The Mini Tractor

CAPTAIN 263 4WD

CAPTAIN 273 4WD

Transmission

Type	Sliding Mesh Transmission : Side Shift Gear Levers	Sliding Mesh Transmission : Center Floor Gear Levers
Gear	9 Forward, 3 Reverse	8 Forward, 2 Reverse
P.T.O RPM	540 & 1000 (540E)	540
Steering	Hydrostatic Power Steering	Power Assisted Steering
Brake Type	Multi Disc Oil Immersed	

Hydraulics

Hydraulic System	Auto Draft Sensing & Depth Control (2 Levers)	
Hydraulic Pumps (LPM)	600 (at Lower Link Point)	
No. of Pumps	2 (One for Hydrostatic Steering & Other for Hydraulic System)	2 (One for Power Assisted Steering & Other for Hydraulic System)
Auxiliary Hydraulics	1 DA Auxiliary Hydraulics with 2 QRCs	1 DA Auxiliary Hydraulics with 2 QRCs and 1 Separate QRC for Trailer Tipping



6 TYRE OPTIONS AVAILABLE FOR MODELS : 263 & 273



Tyre

	AGRICULTURAL	TURF	INDUSTRIAL / FLATATION	AGRICULTURAL WIDE	GALAXY GARDEN PRO	WIDER F-AGRI
Hydraulic System	180/85D12	23 x 8.5 - 12	23 x 8.5 - 12	6.5/80-12	220/55R12	23 x 8.5 - 12
Hydraulic Pumps (LPM)	8.3 x 20	33 x 15.5 - 16.5	33 x 15.5 - 16.5	280/70R18	280/70R16	280/70R18

Engine

Engine Horse Power (HP)
25

Engine Type
Mitsubishi Stage-V

No. of Cylinder
3

Capacity (CC)
1319

Rated Speed (RPM)
2500

Cooling System
Liquid Cooled

Bore / Stroke (mm)
78/92

Max Torque (Nm) @ RPM
76.3 (Nm)@2000 RPM

Speed & Dimensions

CAPTAIN 263 4WD						
Max. Speed (km/hr.)	21.45	20.25	20.20	20.46	19.28	20.46
Size L x W x H (mm)	2674* x 1027 x 2106	2674* x 1479 x 2082	2674* x 1483 x 2078	2674* x 1167 x 2086	2674* x 1217 x 2057	2674* x 1167 x 2086
Wheel Base (mm)	1500	1500	1500	1500	1500	1500
Track Center F (mm)	920	1020	1020	920	1020	1020
Weight (kg)	950	992	1020	952	959	956

Speed & Dimensions

CAPTAIN 273 4WD						
Max. Speed (km/hr.)	22.80	22.08	22.08	22.31	21.03	22.31
Size L x W x H (mm)	2650* x 1065 x 2025	2650* x 1510 x 2005	2650* x 1510 x 1980	2650* x 1200 x 2000	2650* x 1260 x 1980	2650* x 1200 x 2000
Wheel Base (mm)	1500	1550	1550	1550	1550	1550
Track Center F (mm)	920	1020	1020	920	1020	1020
Weight (kg)	1030	1072	1080	1032	1039	1040

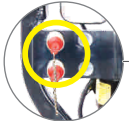
*Dimensions are with lower link, it may vary with longer Linkages.

*+/- 5% Variation.

Note : Products undergo continuous upgradations. Hence, above mentioned specifications are subject to change without prior notice.

MODEL EU 263 (25 HP)

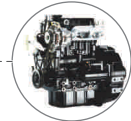
INTRODUCING THE NEW CAPTAIN



1 DA AUX. HYDRAULIC (STANDARD)
1 EXTRA AUX. HYDRAULIC (OPTIONAL)



ELECTRIC SOCKET



MITSUBISHI 3 CYLINDER ENGINE EURO STAGE 5



ITALIAN DESIGNED LION FACE



FRONT OPENING BONNET



SIDE SHIFT GEAR LEVER (9 +3 GEARS)
TOP SPEED 21.45 KM/HR. (AGRI TYRE)



DIFFERENTIAL LOCK



TWO SPEED PTO



SMART ADDC (2 LEVER) HYDRAULICS (AUTO DRAFT SENSING)



SHORT TURNING RADIUS




2 HYDRAULIC PUMPS



HYDROSTATIC POWER STEERING



MULTI DISC OIL IMMERSED BRAKES



ERGONOMIC SEATING WITH ALMOST FLAT FOOTBOARD (WITH RUBBER MAT)

6 DIFFERENT TYRE OPTIONS



AGRICULTURE IMPLEMENTS



CAPTAIN
Pioneer of The Mini Tractor

MOULD BOARD PLOUGH



Depth in Soil : **155 to 170 mm (6"-7")**
Furrow : **2/3 Optional**

REV. MOULD BOARD PLOUGH



Depth in Soil : **180 to 205 mm (7"-8")**
Furrow : **2**

DISC PLOUGH



No. of Discs : **2**
Diameter of Disc : **560 mm (22")**

DISC HARROW



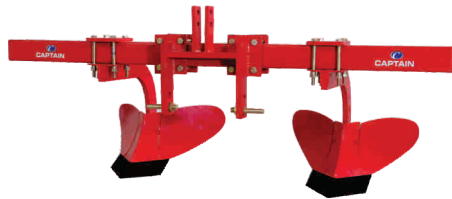
No. of Discs : **7 X 7 / 8 X 8**
Diameter of Discs : **457 mm (18")**

AGRICULTURE IMPLEMENTS



CAPTAIN
Pioneer of The Mini Tractor

RIDGER HEAVY DUTY (2 BODY)



Adjustable Wings
Width : 2 m

CHISEL RIDGER



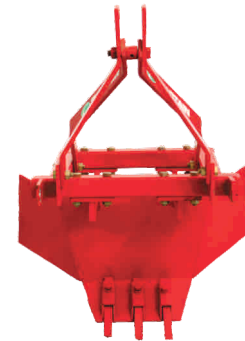
Tynes : 3 Bar Shares
Width : 1.2 m

CULTIVATOR SET



Frame : Width 1.2 m (2 m extendable)
Cultivator 7 Tines + Blade Cultivator 2 Rows
+ Leveler 1.2 meters

FURROW ATTACHMENT



Width in Soil : 440 mm (17")
Application : To make small water channels
in the Field

AGRICULTURE IMPLEMENTS



CAPTAIN
Pioneer of The Mini Tractor

ROTARY TILLER



Working Width : **0.8 m/1 m/1.2 m**
Blade Type : **L**

CAGE WHEEL SET



**Wet Land Cultivation for
Rice / Paddy (Puddling)**

POST HOLE DRIGGER



Auger Dia Size : **22 cm (9")**
Depth : **60 cm (24")**

CENTRIFUGAL PUMP / ALTERNATOR



Pump Size : **80 X 65 to 100 X 100**
Alternator (KVA) : **7.5/10/12.5 (1/3φ)**

AGRICULTURE IMPLEMENTS



CAPTAIN
Pioneer of The Mini Tractor

SEED CUM FERTILIZER DRILL



POTATO PLANTER



SPRAYER PUMP



SPRAYER VERTICAL



Multi Row : **Multi Crops**
Useful for : **Planting Seeds & Fertilizer**



Sowing Distance : **20 cm / 25 cm / 30 cm / 35 cm**
Container Capacity : **50 kgs**



Nozzles : **9**
Tank Capacity : **200 / 300 Ltr.**



Nozzles : **8**
Tank Capacity : **200 / 300 / 500 Ltr.**

AGRICULTURE IMPLEMENTS



CAPTAIN
Pioneer of The Mini Tractor

HEIGHT ATTACHMENT



REAPER ATTACHMENT



POTATO DIGGER MINI 1 ROW



CHAFF CUTTER



Wheel Track : **1.2 m / 1.5 m**
Ground Clearance : **1 m**



Drive Type : **Hydraulic Motor Drive**
Width : **1.2/1.5 m**



Number of rows : **1**
It used for **digging out the potatoes**
from field.



To Chop **Forage Grass, Crops, Agri
Debris, etc.** Into Small Pieces.

AGRICULTURE IMPLEMENTS



CAPTAIN
Pioneer of The Mini Tractor

TRAILER



TANKER



LOADER



BOOM SWEEPER



Size : **50 Feet / 60 Feet**
Capacity Load : **2 / 2.5 T with Hyd. Tipping**



Capacity Single Axle : **2000 ltr.**



Bucket Cap. : **300 kgs**
Width : **1.2 m**
Center Open Buket



Drive Type : **Hydraulic Motor Drive** Operational in
F / R Direction Bristle - Plastic / Steel



CAPTAIN
Pioneer of The Mini Tractor

EXPORTS



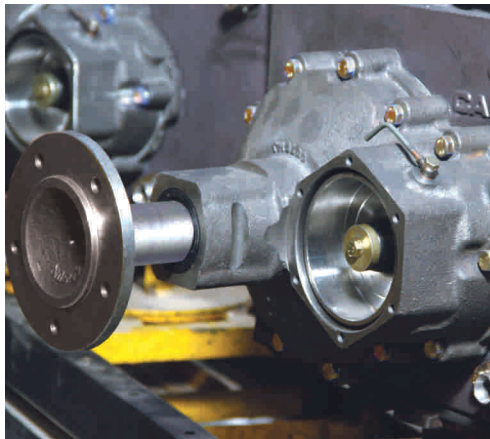
Core Export Team : Captain Agri Machinery Exim LLP

CONTINUOUS INNOVATIONS PUT US EVERYWHERE ACROSS THE GLOBE



CAPTAIN
Pioneer of The Mini Tractor





SUITABLE FOR ALL WEATHER
FIELD CROPS OR ORCHARDS



CAPTAIN
Pioneer of The Mini Tractor



COMMITMENT
COURAGE
CONSISTENCY

WELL KNOWN FACES WITH CAPTAIN TRACTORS



SHRI NARENDRABHAI MODI
HON'BLE PRIME MINISTER (THE THEN CM, GUJARAT), INDIA



SHRI KESHUBHAI PATEL
HON'BLE CHIEF MINISTER - GUJARAT



SHRI RAJNATH SINGH
HON'BLE HOME MINISTER (The Then President, BJP) INDIA



SHRI VIJAYBHAI RUPANI
HON'BLE CHIEF MINISTER OF GUJARAT



SHRI. RADHEKRISHNA PATIL
HON'BLE AGRICULTURE MINISTER - MAHARASHTRA



SHRI BHUPENDRA SINH CHUDASAMA
HON'BLE Ex. AGRICULTURE MINISTER - GUJARAT



Mr. PARSHOTTAMBHAI RUPALA
HON'BLE STATE AGRICULTURE MINISTER - GUJARAT



Mr. V. V. VAGHASIYA
HON'BLE STATE AGRICULTURE MINISTER - GUJARAT



SHRI DINSHA PATEL
HON'BLE STATE MSME MINISTER - GUJARAT



Mr. SUSHIL KUMAR
INDIAN FREE STYLE WRESTLER



PLANT VISIT BY SHRI RAJ THAKRE
PRESIDENT M.N.S.



EL. SADIG.M.ALI HASAB RASOUL
STATE INVESTMENT MINISTER (SUDAN)



CAPTAIN
Pioneer of The Mini Tractor



Mr. WILLY BETT
CABINET SECRETARY-MINISTRY OF AGRICULTURE - KENYA



MR. VINCENT SSEMPIJA
MINISTER OF AGRICULTURE - UGANDA



PRIME MINISTER OF INDIA, SHRI NARENDRA MODI ALONG WITH
CHAIRMAN : AFRICAN DEVELOPMENT BANK.



PARTICIPATION IN EIMA EXHIBITION
BOLOGNA, ITALY



SHRI M. VENKAIAH NAIDU
(THEN) HON'BLE FORMER UNION CABINET MINISTER
FOR RURAL DEVELOPMENT



Mr. PRADHASARDHI
CHIEF SECRETARY OF AGRICULTURE - TAMILNADU



Mr. PATTIPATI PULLARAO
HON'BLE AGRICULTURE MINISTER - ANDHRAPRADESH



PARTICIPATION IN SIMA EXHIBITION
PARIS



SHRI NARESHBHAI PATEL
PRESIDENT OF KHODALDHAM TRUST



SHRI VASHANBHAI AHIR
MLA - KUTCH, (GUJARAT)



SHRI YOGENDRA SAV
HON'BLE AGRICULTURE MINISTER - JHARKHAND



PARTICIPATION IN FIMA EXHIBITION
SPAIN



CAPTAIN
Pioneer of The Mini Tractor

**MADE FOR
THE GLOBE**



***FLEXIBLE
FEARLESS
FABULOUS***

ALL INDIA DEALER MEET



CAPTAIN
Pioneer of The Mini Tractor



Lamp Lighting Ceremony by
Mr. Rajesh Patel (M.D.)
with Mr. G.T.Patel & Mr. M.T.Patel



Introductory Speech by Mr. Rajesh Patel
(Managing Director, Captain Tractors Pvt. Ltd.)



Mass of Dealer Meet at Khapoli
(Lonavala)



Dealer Gathering at Khapoli
(Lonavala)



Dealer Gathering at Udaipur



Dealer Appreciation at Udaipur



Dealer Appreciation at Khapoli
(Lonavala)



Mass of Dealer Meet at Udaipur



Dealer Appreciation at Goa



Dealer Gathering at Goa

ASSOCIATED SUPPLIERS



EU
APPROVED

8G
THE EIGHTH
GENERATION

BAGHEERA



CAPTAIN
Pioneer of The Mini Tractor



हम है कैप्टन, कैप्टन है हम



CAPTAIN

Pioneer of The Mini Tractor

CAPTAIN TRACTORS PVT. LTD.

Padavala Road, Veraval (Shapar), Taluka : Kotda Sangani, Dist : Rajkot - 360024 (Gujarat) India.

Phone : +91 97262 70707, 92280 18432, 99741 99057.

Email : info@captaintractors.com, Web : www.captaintractors.com